

STATELY



Residential Collection

[www.stately-albion.co.uk](http://www.stately-albion.co.uk)

# Welcome to Stately-Albion

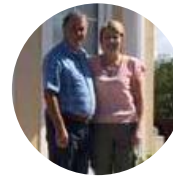
Europe's longest established  
manufacturer of park homes

“  
Our  
customer  
satisfaction  
speaks for  
itself  
”

*My wife and I decided to move into our new State Albion park home, which we have now lived in for 12 months.*

*We are very pleased that we chose Kinderton Park, and were very well cared for during the process by Annemarie and Tom.*

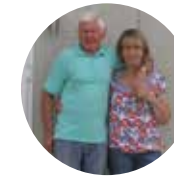
*The after sales care has been excellent from Stately Albion, and any issues which we have had during the 12 months settlement have been addressed by Annemarie and Tom who take great care that you are happy with your home.*



**GARY AND ROSINA**  
Kinderton Park

*We moved into our Stately Albion Platinum home just over six years ago and we are delighted with it. The first class furnishings and fittings are still in excellent condition. There were a few snagging problems to begin with, but with prompt professional service from Stately these were soon resolved. The home is very easy to heat in winter. With double glazing and numerous radiators fitted throughout, it is warm and cosy on the coldest of days.*

*We are very pleased we chose a Stately home and would certainly recommend it to other people.*



**MR & MRS GRAHAM**  
Hayes Country Park

*We have been living in our Stately Albion Park home for 3 and a half years now, we viewed the Chatsworth Gold show home on site and were highly impressed and even more so when we knew we could make adjustments and bespoke to our own personal requirements.*

*Julie was extremely helpful in assisting us design the interior, we took out the study and extended our kitchen and en suite - perfect. We love our new home. Living in a park home is a different lifestyle, relaxing way of life, we love living here. Thank you.*



**MR & MRS HALL**  
Hayes Country Park

*I have been an owner of a stately home for over 5 years now. I fell in love with this home as soon as I opened the door. The quality and craftsmanship of the home is superb and has everything we asked for in a park home.*

*We have had no problems or issues regarding the home and are extremely happy to be owners of a stately. The team are helpful and are always available if we ever need them. The after sales team were a credit to the company and a pleasure to deal with. I would have no hesitation in recommending a stately home to anyone looking for a quality home.*



**MR & MRS CHANCE**

*I have found working with Stately Albion, to design my home from scratch, an exciting and exhilarating experience from start to finish. Working with an experienced and, I have to say, very patient designer to explore infinite possibilities enabled a final selection of layout and styling of my home that suits my taste and lifestyle. Whatever your taste and design ideas, from country retreat to contemporary modern living, Stately Albion can make the dream a reality. Never in my dreams did I think I could design my own home on a budget I could afford. Thanks to Stately Albion I am now living the dream!*



**MARILYN WHISKERD**



4-5	Chatsworth Silver Single	38-41	Chatsworth Platinum Contemporary
6	Crystal Single	42-45	Topaz
7-9	Mayfair	46-49	Cardigan
10-13	Tredegar Contemporary	50-53	Woburn
14-17	Tredegar Elite	54-57	Windsor
18-21	Goodwood	58-61	Wentwood
22-25	Badminton	62-65	Raglan
26-29	Chartwell	66-69	Kensington
30-33	Carmarthen	70-73	Finishing touches
34-37	Chatsworth Gold		

When it comes to experience in the park home industry, no one can match Stately-Albion.

All images are for illustrative purposes. Due to variations in supplies Stately-Albion Ltd., reserve the right to alter materials and specifications without prior notice.

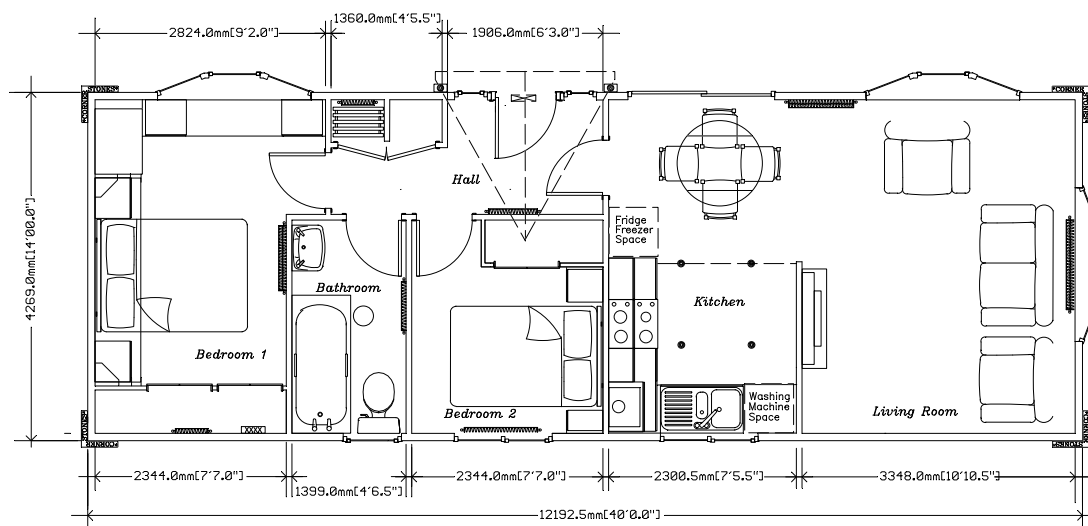
# CHATSWORTH

*Silver Single*





## Chatsworth Silver 40 x 14



*An example layout, more layouts available upon request*

The Chatsworth Silver park home is the direct descendant and replacement of the original Chatsworth Classic.

This lead in model of the Chatsworth park home range still offers a superb range of features and fantastic value for money. The whole Chatsworth range has been developed from ideas and inspiration gained by listening carefully to customers. If you choose a Chatsworth park home, you will benefit from Stately-Albion's years of experience in the design and build of park homes.

As with all Stately-Albion park homes, there's a wide range of options for you to choose from to help make your home unique to you.

# CRYSTAL

*Single*

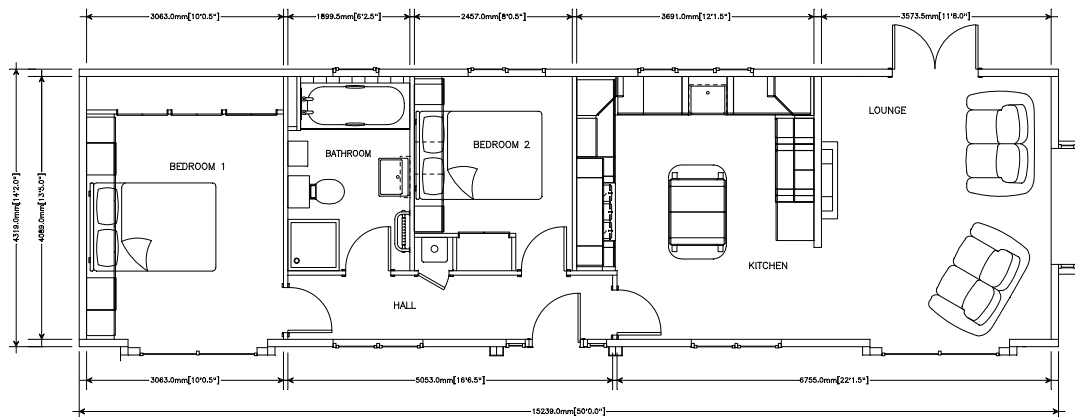


# MAYFAIR





Mayfair 50 x 14



*An example layout, more layouts available upon request*

## Mayfair, the new single unit home from Stately-Albion.

A modern yet classical park home exuding style and sophistication.

The Mayfair is the pinnacle of the smaller home design in the park home range. For those wanting a more compact home but lacking none of the luxurious features of contemporary living. The Mayfair delivers in spades. From the classically styled Kitchen with a Rangemaster oven through to the tall windows framed into the vaulted ceilings to the indulgence of a television in the bathroom.

The Exterior is distinctly from the Stately design palette being a blend of cladding and flattened render giving a pleasing but practical finish.

The Kitchen is a beautiful classic style with luxurious worktops in quartz a Rangemaster cooker and integrated equipment.

The lounge is light and spacious, with light flooding in from our high window, framed into the vaulted ceiling.

Mayfair, the new word in park home sophistication...





TREDEGAR

*Contemporary*



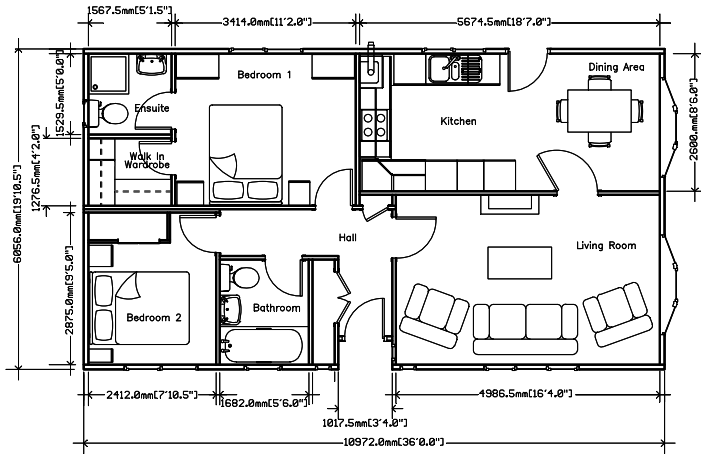


**The Tredegar is one of our longest running and most popular home designs.**

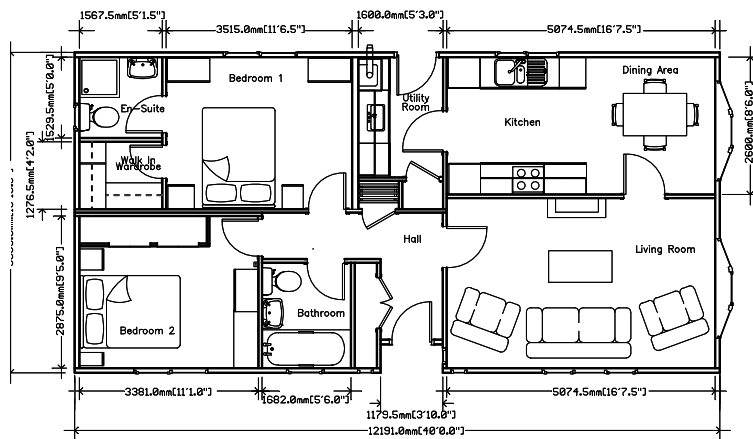
The contemporary adds a modern feel to this timeless home, featuring our newly designed brick slips, and gable design, which are included as standard additions. The kitchen takes the practical Tredegar design, but adds tiling from the worktop to under top lockers, the option of high-gloss doors, integrated fridge/freezer, washing machine and dishwasher. The bedroom furniture has also been upgraded and allows you to choose from an extended range of colour and design options.



## Tredegar Contemporary Twin 36 x 20



## Tredegar Contemporary Twin 40 x 20



*An example layout, more layouts available upon request*



# TREDEGAR

*Elite*

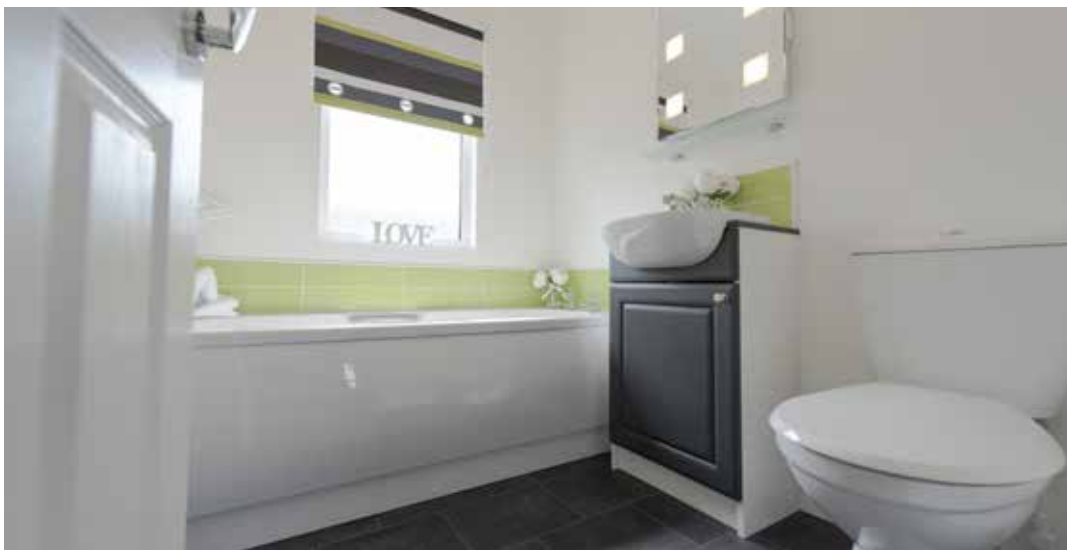


In the spirit of Stately-Albion's ethos of continual development, a brand new model enters the fray in a blaze of double-barrelled glory... Ladies and gentlemen, may we introduce the twin version of the 'Tredegar Elite'.

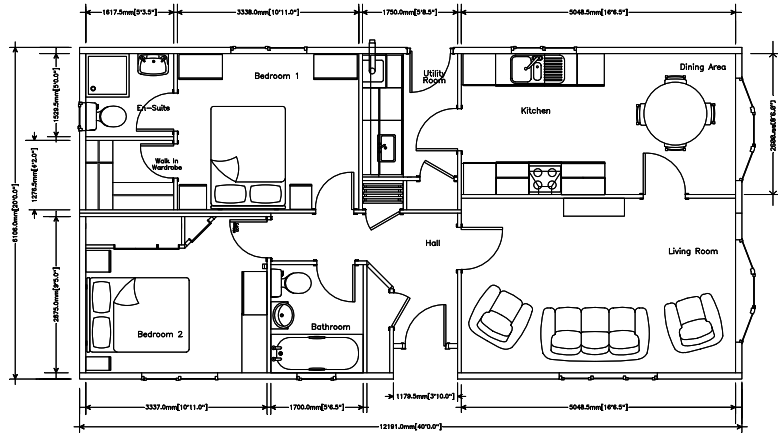
The Tredegar has long been established as the bedrock that provides the foundation of the entire Stately range, and continues to offer exceptional value for money, especially with the introduction of the latest sibling... a twin, but not identical!

In order to offer customers a wider and more varied range, the Tredegar Elite steps in to provide a practical and well-equipped choice between traditional and modern – becoming the missing link in the Stately canon. Offering the same high spec of finish and appliances, the Elite provides a very definite and individual alternative.

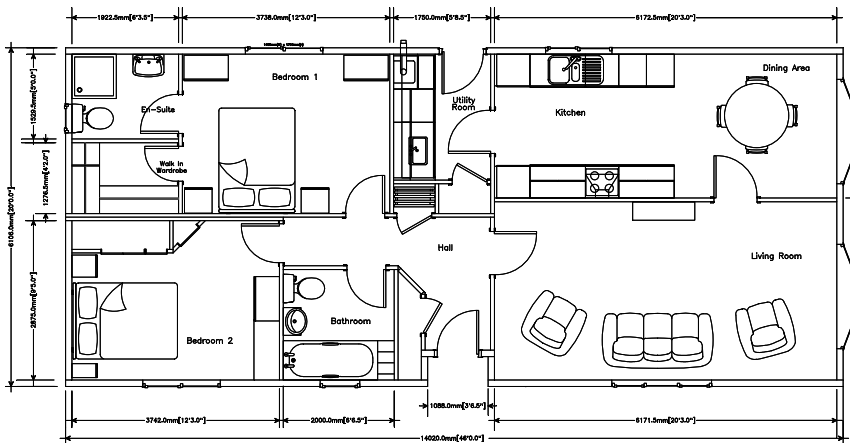




## Tredegar Elite 40 x 20



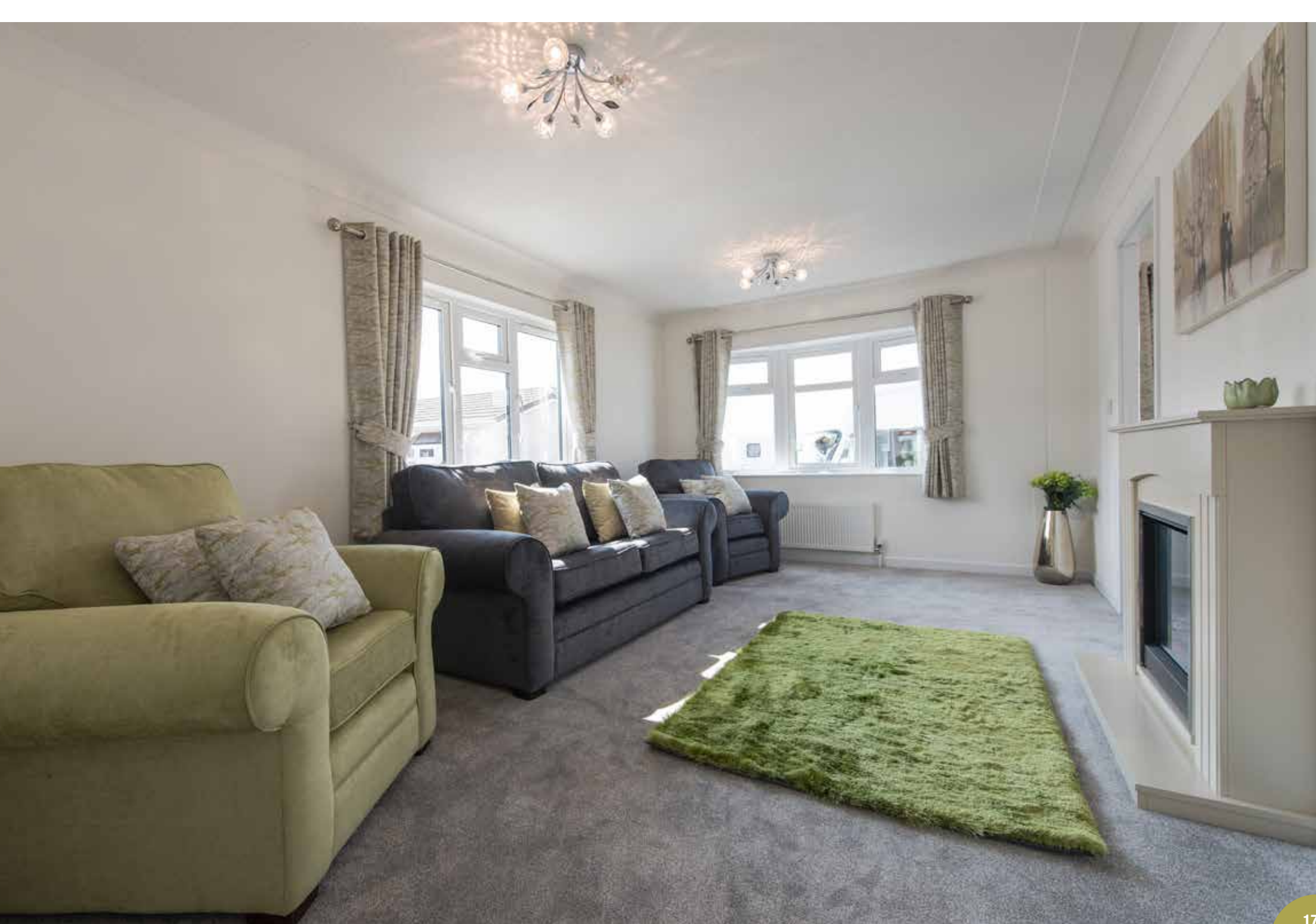
## Tredegar Elite 46 x 20



*An example layout, more layouts available upon request*







# GOODWOOD





A long-time and highly respected member of the Stately-Albion stable of residential homes, the Goodwood was just beginning to show signs of age and it was decided that a tasteful facelift was called for.

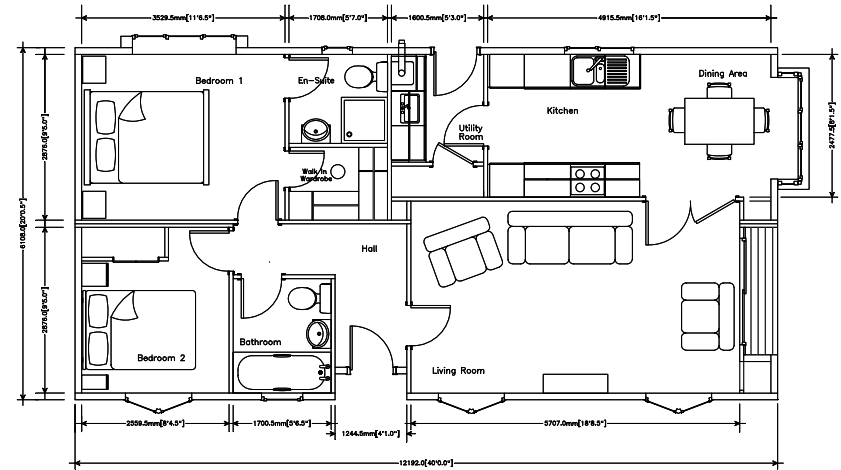
Whilst retaining all the familiar features that have been synonymous with the Goodwood's success down the years, our design department made the tasteful and minor changes that help bring the Goodwood up to date and in line with the current homes being offered by Stately.

The exterior has been given a fresh and dynamic look by the addition of a gable over the front door, feature compound-bay windows and the squaring off of the patio doors recess; the creative use of CanExel cladding around the walk-in bay and other windows help create a shared and corporate identity with other Stately models such as the Woburn, Wentwood and Windsor, which in turn serves to give the range a flowing familiarity. By adding stronger and more obvious features to the exterior, the home now possesses far more plot-options than was previously the case.

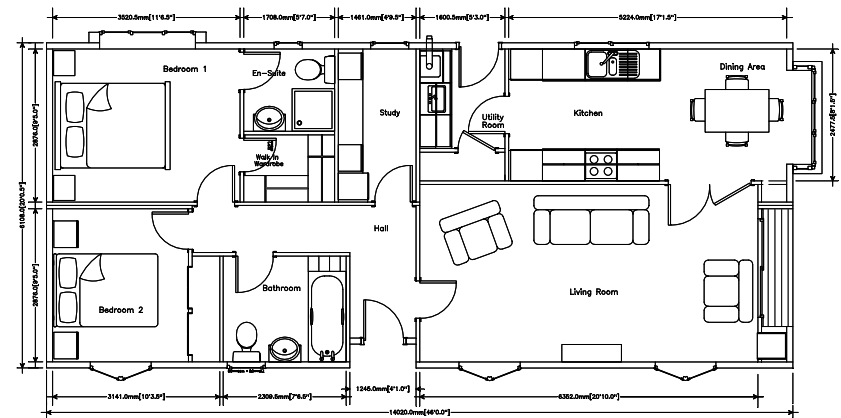




Goodwood 40 x 20



Goodwood 46 x 20



*An example layout, more layouts available upon request*

# BADMINTON





In answer to customer requests Stately-Albion have now developed the highly sought after Badminton range.

Some subtle but effective new features have allowed our designers to produce a home that looks truly unique. The exterior benefits from stylish mock window shutters whilst incorporating an aesthetically pleasing and practical covered area above the front door. The Badminton's open plan lounge-diner maximises the potential for space, whilst the kitchen has all the amenities required in a modern household. With your comfort in mind, the master bedroom boasts a much welcomed ensuite and walk-in wardrobe.

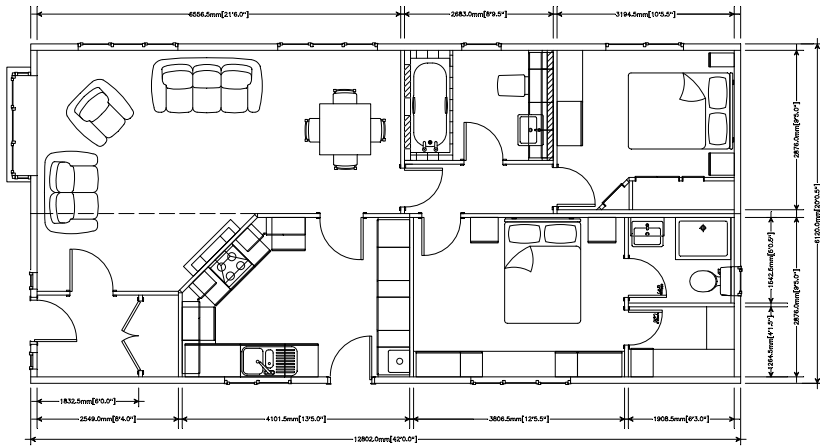
A lot of thought has gone into the design and build of the Badminton range to maximise its potential. So much so that the home works well in a variety of sizes.



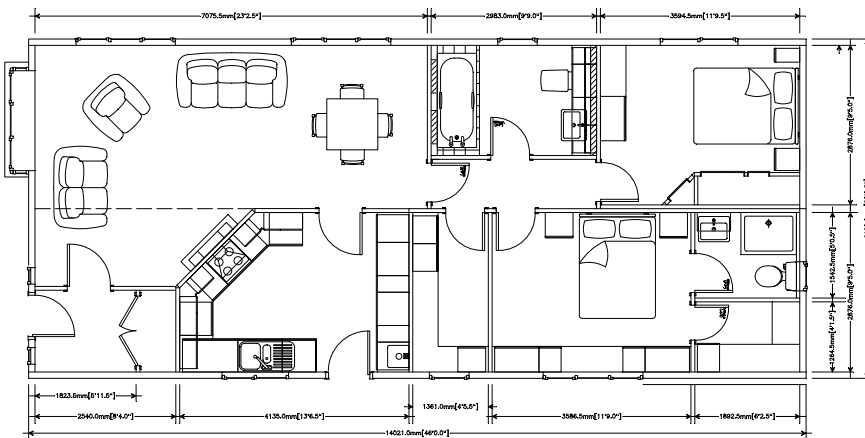




## Badminton 42 x 20



## Badminton 46 x 20



*An example layout, more layouts available upon request*



# CHARTWELL





## Chartwell a new name in the Stately range. A new concept in stylish contemporary country style living.

The distinct exterior has a lovely clean contemporary and practical finish. A blend of low maintenance materials with its large windows giving ample of light. A solid composite door compliments the elegant grey windows, neatly contrasting with the exterior finishes.

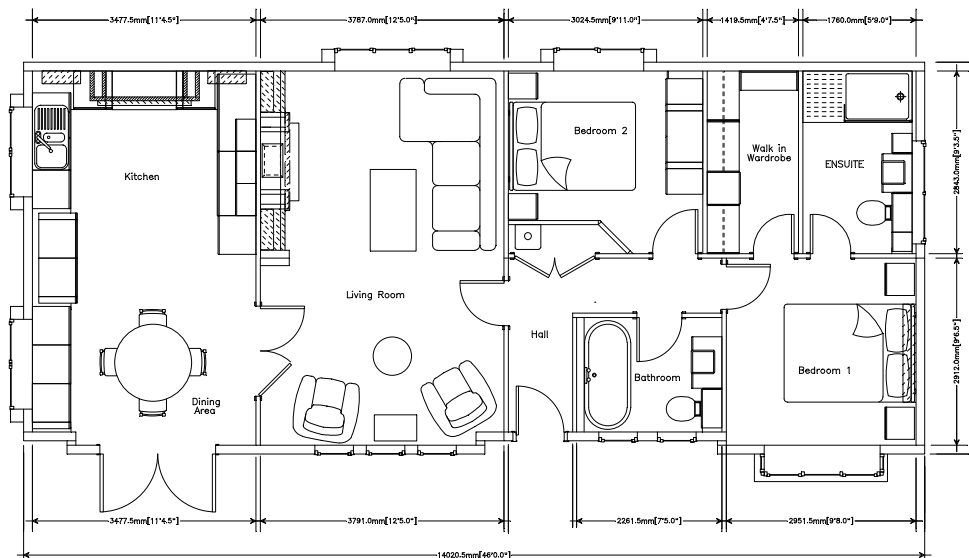
Inside the ingenious design offers a fully featured country style kitchen diner across the full width of the home. Giving the opportunity to bake those perfect cakes on the large Range style cooker. The central lounge is luxuriously appointed around the inglenook style fireplace. A truly relaxed and comfortable atmosphere.

The bedrooms are a haven of relaxation and practicality with a large comfortable ensuite and well equipped walk in wardrobe.

The Chartwell is a wonderful, comfortable, practical home providing the flexibility you require.

As with all of our Stately homes changes may be made on request.

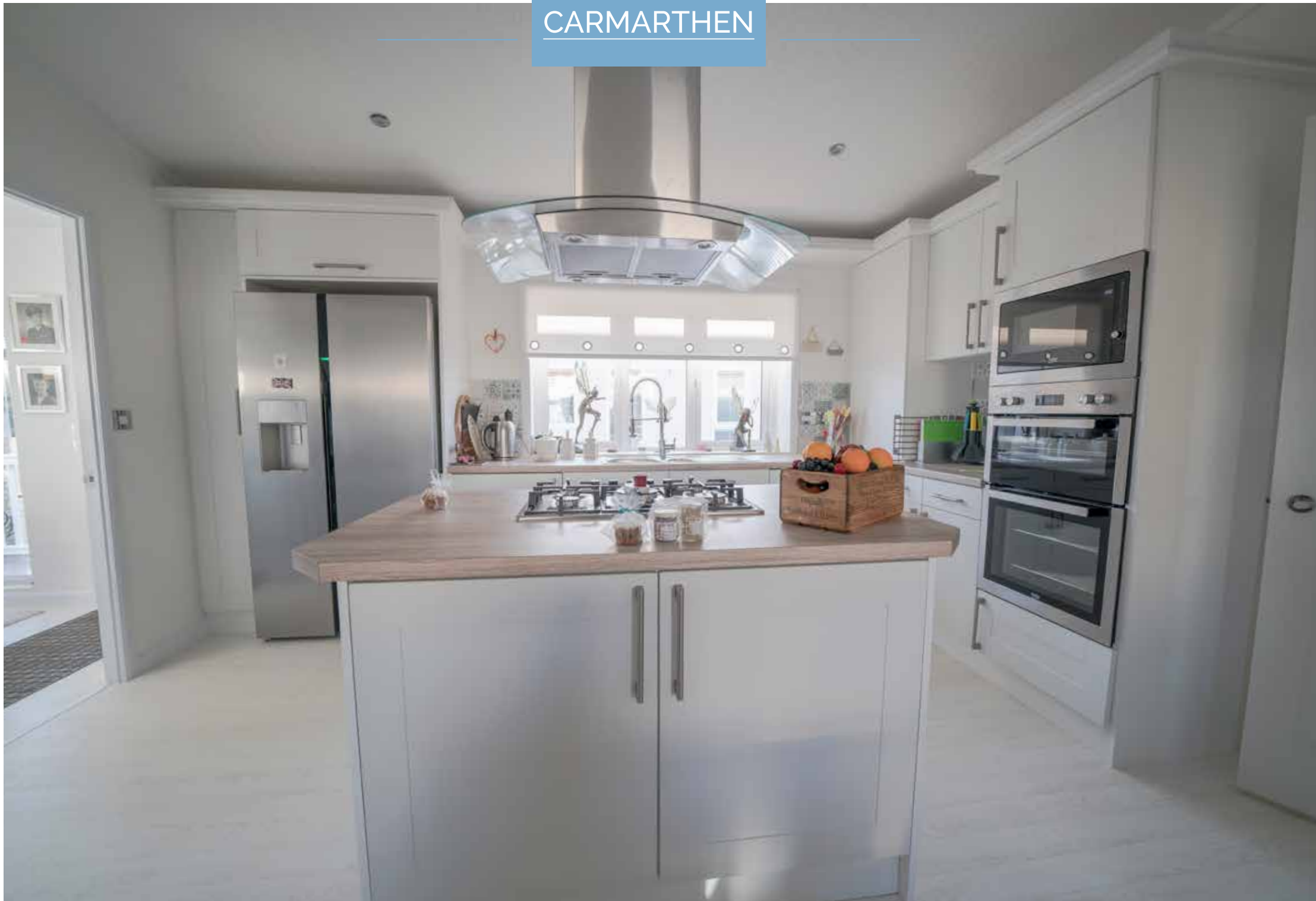
Chartwell 46 x 20







# CARMARTHEN





The Carmarthen park home with its integral sunroom is one of the latest additions to the Stately-Albion park home collection.

By incorporating vaulted ceilings in the sunroom, lounge, diner and kitchen, we've made a light and airy living space. The sunroom, as you would imagine, has lots of glass and Velux windows, making it an ideal place to spend time - even if it's just watching the world go by!

As with all Stately-Albion park homes, there's a wide range of options for you to choose from to help make your home unique to you.

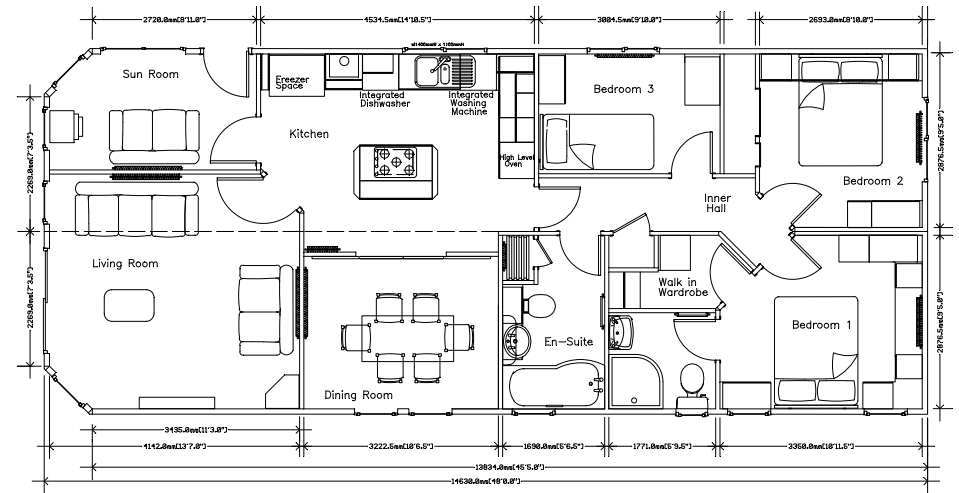




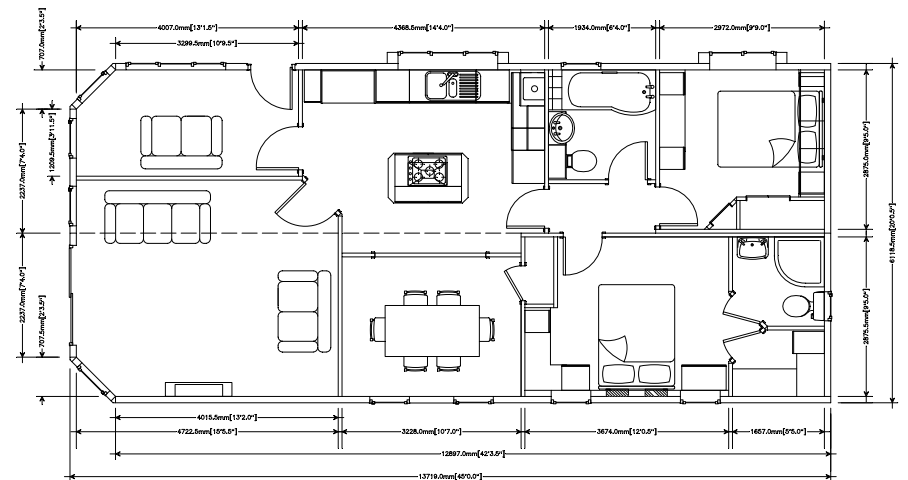




## Carmarthen 48 x 20



## Camarthen 45 x 20



*An example layout, more layouts available upon request*

# CHATSWORTH

*Gold*





**The Chatsworth Gold is a classic design long associated with Stately-Albion.**

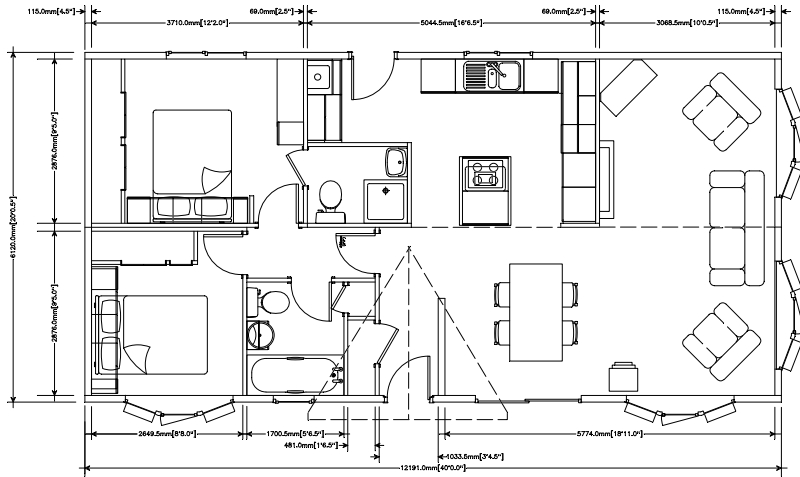
The Gold has an elegant design bringing light into the home.

Externally the Gold benefits from two long bay windows to the side elevation in addition to the two standard bays to the front, which are enhanced by Georgian glazing.

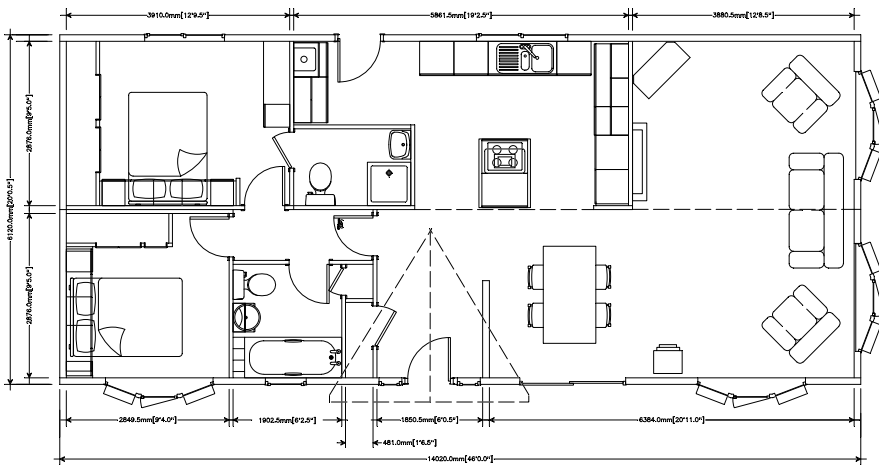
You also have a choice of high gloss kitchen styles and accompanying fittings. You will be pleased to know that we now fully integrate your kitchen as standard.



## Chatsworth Gold 40 x 20



## Chatsworth Gold 46 x 20



*An example layout, more layouts available upon request*





CHATSWORTH

*Platinum Contemporary*





The Platinum Contemporary builds on the success of the Chatsworth range; offering modern exciting décor with a touch of indulgent luxury.

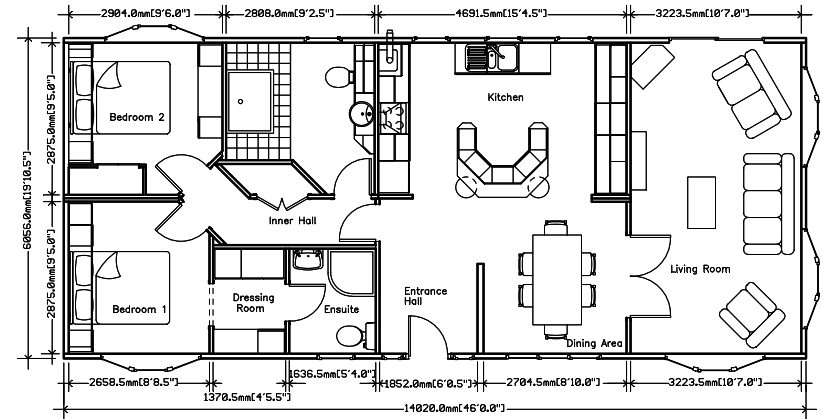
The design of the Platinum Contemporary revolves around the kitchen and bathroom. The kitchen is a bold example of modern living. Spacious, light and equipped with integrated fridge/freezer, dishwasher and washing machine. Vaulted ceilings to the lounge, kitchen and diner emphasise the light and airy feel of this home. A choice of tasteful colour schemes are available.



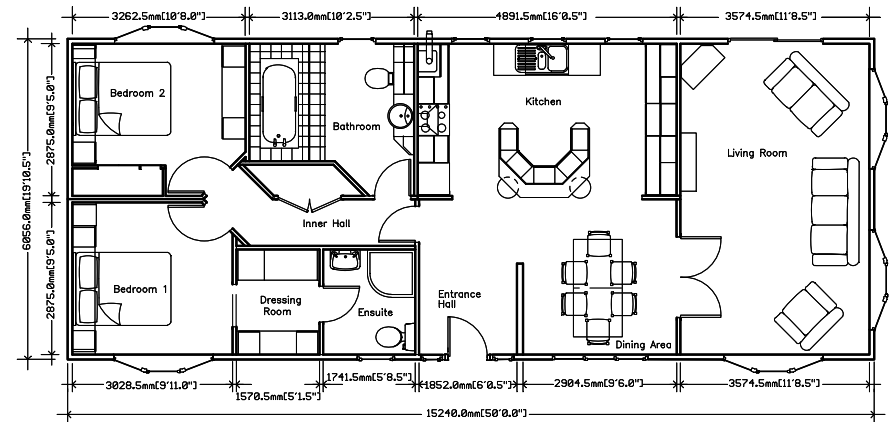




Chatsworth Platinum  
Contemporary 46 x 20



Chatsworth Platinum  
Contemporary 50 x 20



*An example layout, more layouts available upon request*

TOPAZ





**Divine is the first word you think when you enter the decadent Topaz.**

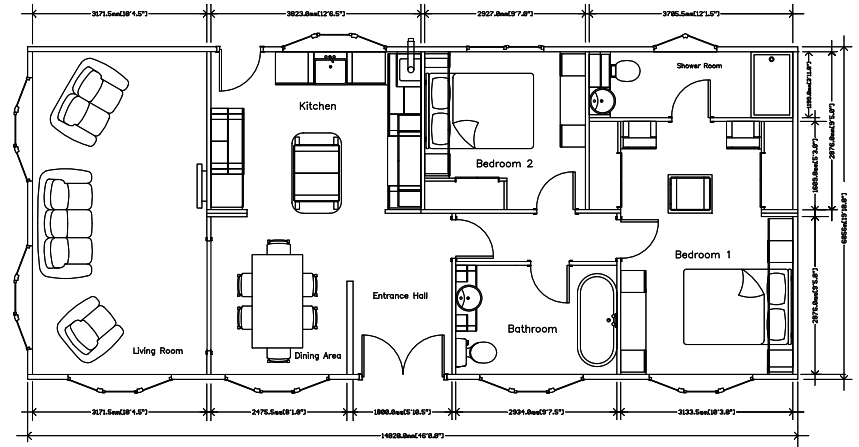
Stately-Albion have designed their finest home yet, where every consideration has been taken with your comfort in mind.

From the grand entrance you will see the ornate kitchen complete with a Range oven and Butler sink, ensconced in granite worktops. There is a complimentary granite tile floor to enhance the overall grandeur. Plush yet practical, including integrated appliances, with a useful, yet pleasing centre island. The primary bedroom has a walk through dressing area which also enjoys illuminated cabinets. Granite worktops are also included in your bedroom on the attractive centre island and carries through into the fully tiled ensuite bathroom.

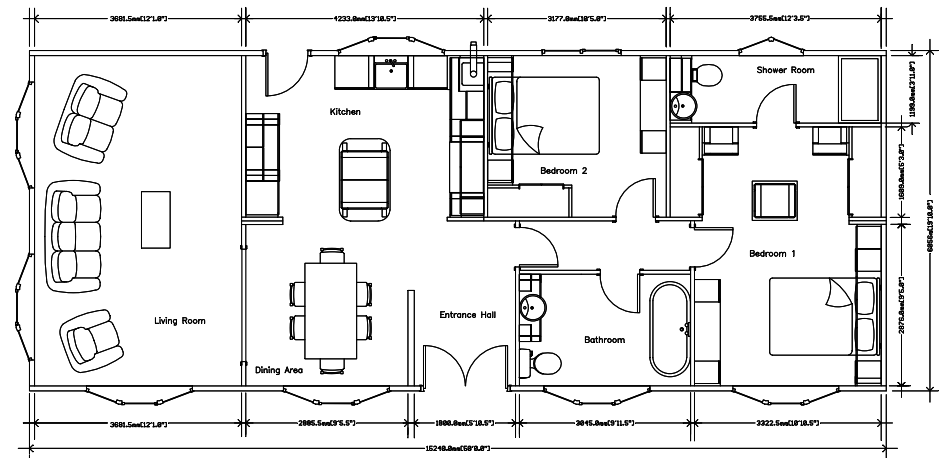
The large family bathroom has not been neglected and is also fully tiled, In keeping with the rest of the home we have included a roll top bath and magnificent vanity unit. Seeing is believing when you view the new Topaz. We truly have answered all your wishes with the incredibly stylish home.



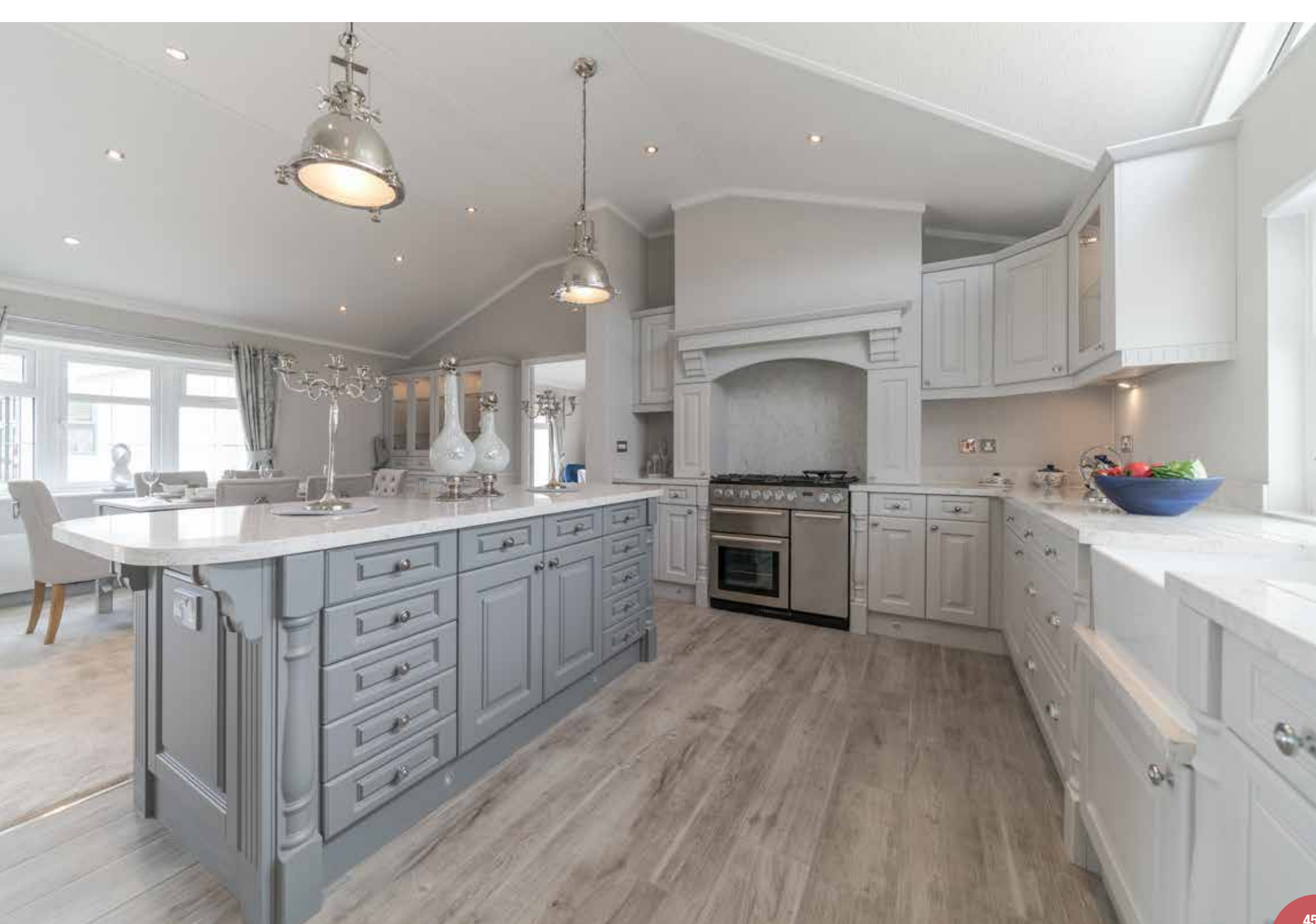
Topaz 46 x 20



Topaz 50 x 20



*An example layout, more layouts available upon request*



# CARDIGAN





The Cardigan is able to evoke memories of the cottages that are seen throughout the glorious British countryside.

With feature beam ceilings, and Inglenook fireplace, along with your very own range of oven to the kitchen. We have cleverly hidden the dishwasher and fridge freezer by integrating them into your kitchen units retaining the feel of a country kitchen. The bathroom has a traditional roll top bath and feature tiled wall.

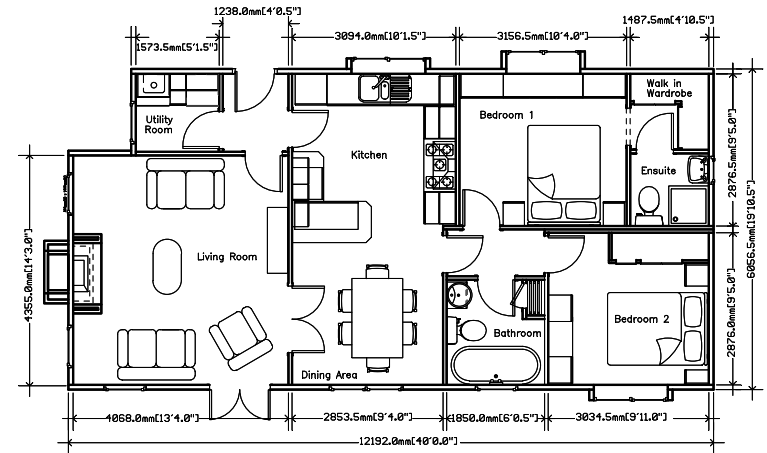
The bedroom units have also been selected from our range to compliment the traditional styles. As always Stately-Albion are able to accommodate your personal requirements.



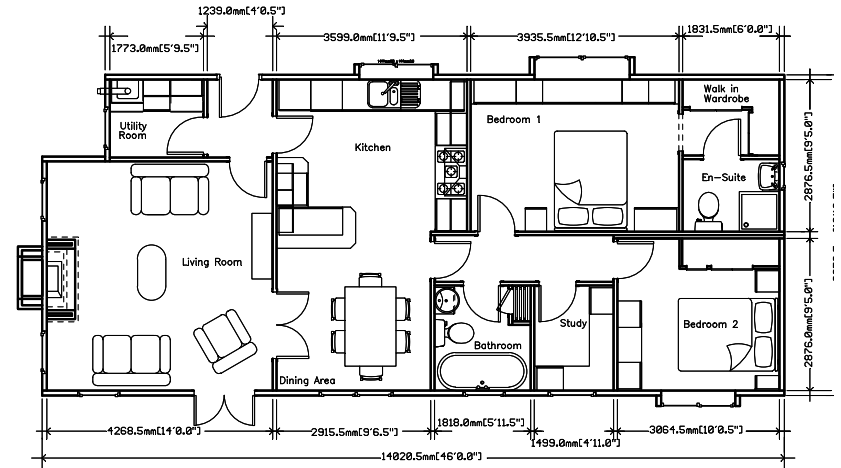




Cardigan 40 x 20



Cardigan 46 x 20



*An example layout, more layouts available upon request*

# WOBURN





Unveiled for the very first time at the 2014 National Park and Holiday Home Show, Newbury, we were proud to have exhibited the latest addition to our Residential Park Home range, The Woburn.

Externally, the Woburn is striking with its box bays and inset front door, complemented with feature cladding to emphasise its modern angular shapes.

If fine cuisine is to your liking, then there's no better place to prepare your meals than in the spacious kitchen. Incorporating a well designed open plan kitchen/diner, keeping your guests entertained whilst preparing your meals becomes an effortless task.

The luxurious bathroom is a desirable space for those relaxing moments when you just want to switch off, relax, and soak in a warm bath under candlelit alcoves.

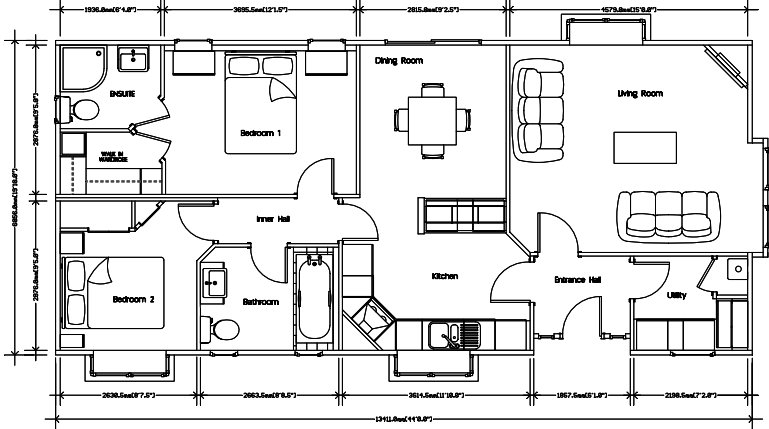
As always our designers have thought about you, the resident, and the practicality and ease of living.



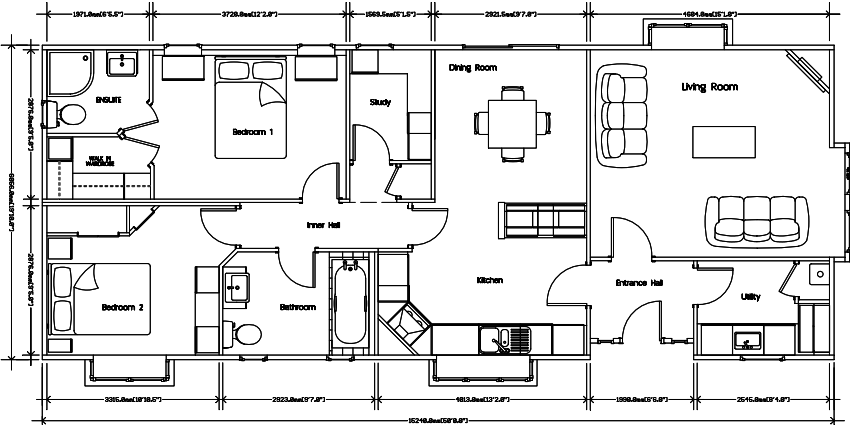




Woburn 44 x 20



Woburn 50 x 20



*An example layout, more layouts available upon request*

WINDSOR



Just when you thought you had 'seen it all' in a park home, Stately-Albion's designers have once again come up with an innovative design in the new Windsor.

The lounge has an attractive privacy window which leads into the spacious kitchen diner with a beautiful walk in bay window.

The lovely kitchen, which of course includes integrated appliances, leads to a useful utility area and rear entrance door.

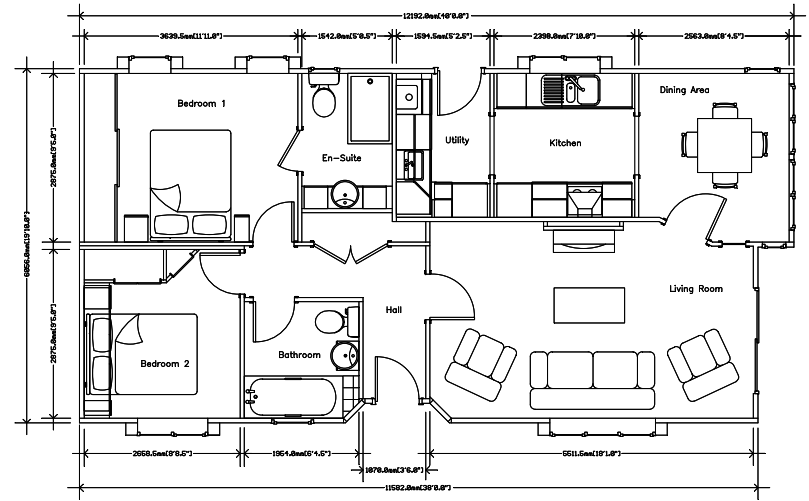
We at Stately-Albion pride ourselves in having the best designed homes in today's market and we have always been the leaders. This home proves that once again we have 'got it right'.

The fully tiled bathroom and ensuite complete with complementing vanities are sure to please you. The master bedroom has lovely sliding wardrobe doors to allow you the maximum storage area, with ease of access. The guest bedroom also enjoys an array of wardrobe and storage space. Beware, your guests may wish to stay longer, as we are sure they will appreciate this glorious home.



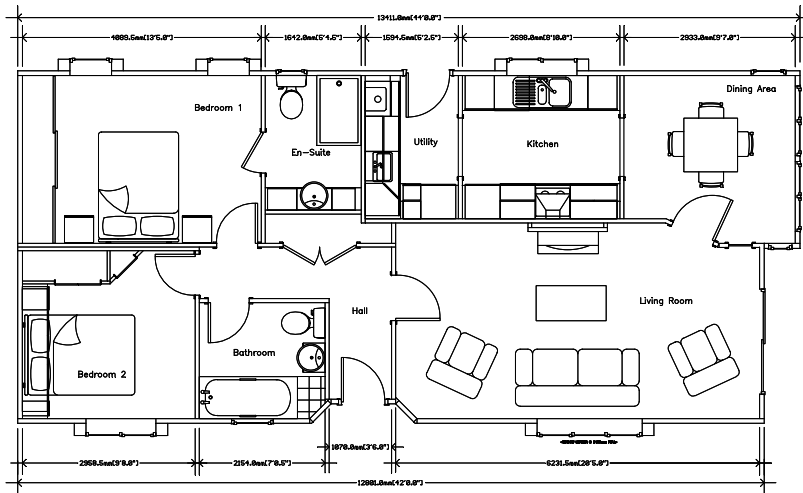


Windsor 40 x 20

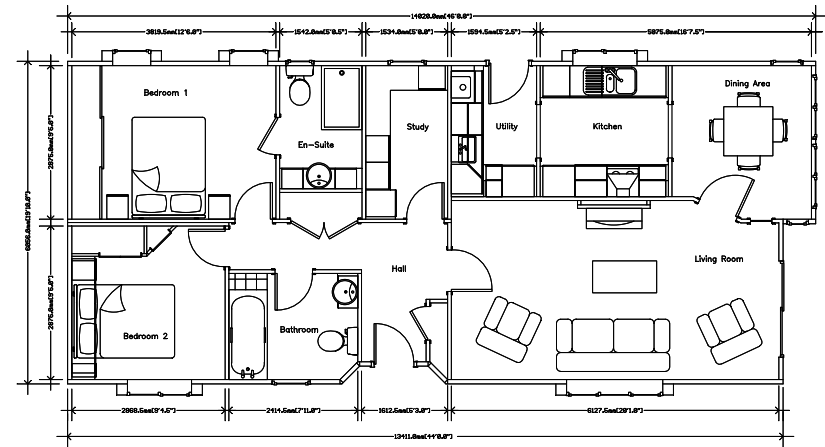




Windsor 44 x 20



Windsor 46 x 20



*An example layout, more layouts available upon request*



# WENTWOOD





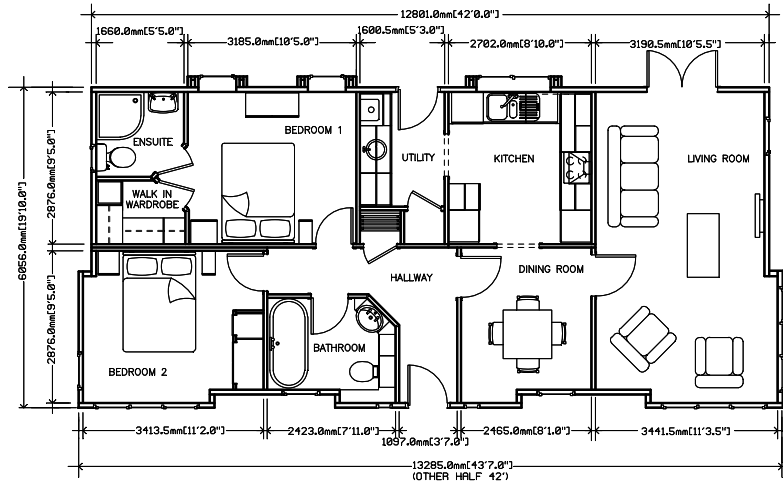
Reacting to changing lifestyles Stately-Albion have designed The Wentwood. A modern home filled with light offering all the comforts of home.

A combination of render and cladding has been applied to the exterior of the Wentwood which helps emphasise its features and defines its character. The interior benefits from a mix of vaulted and flat ceilings combined with large windows throughout to give you that light and spacious homely feel you have been looking for.

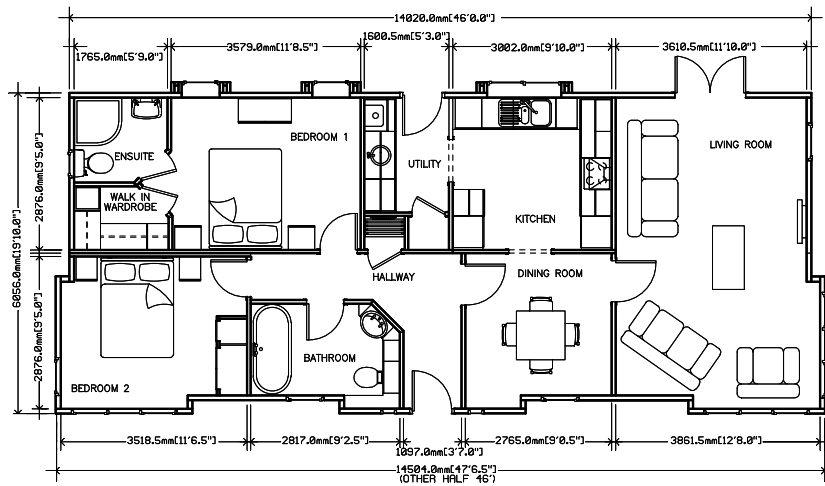
As with all Stately-Albion homes there is a wide range of packages to choose from to help you make your home just the way you would like it to be.



## Wentwood 42 x 20



## Wentwood 46 x 20



*An example layout, more layouts available upon request*

# RAGLAN





Shown with optional CanExel cladding

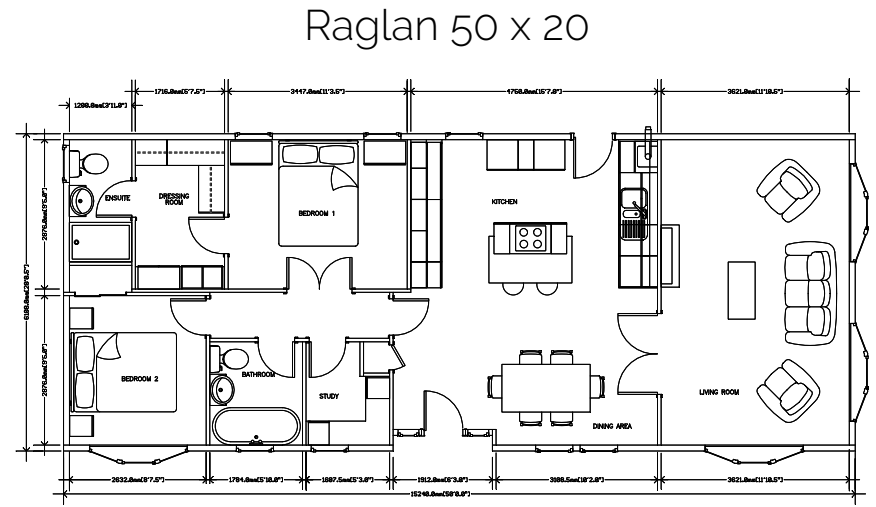
As always we listen to you our customers, and what you would like us, the UK's longest established manufacturer, continuously trading since 1963, to do for you.

The grand Kitchen and Diner, is a new twist to our popular Chatsworth range. Integrated appliances are included as standard in the luxurious cabinets. We have included a high level oven and useful pull out storage cabinet all aimed to making your life easier.

The master bedroom, with stylish double entrance doors, gives you a private retreat to relax and distress from your busy days. The large walk through wardrobe leads to a well designed en suite.

The bathroom is yet another jewel in the Raglan crown. It has a delightful roll top bath with a clever stone effect wall behind it. A tasteful vanity unit completes the picture.

A complimentary furnishing package is included, however, we are happy to accommodate your requirements with regards to individual choices on interior selection. Speak to our sales team to discuss yours.



*An example layout, more layouts available upon request*







# KENSINGTON





The Kensington appeals to a more contemporary customer-base, it's huge windows, clean unfussy lines and vaulted ceilings leading to a light and airy environment that ultimately creates the impression of immense interior space.

The beautifully equipped designer kitchen creates a stunning welcome as you enter and the sensationally furnished main bedroom oozes class.

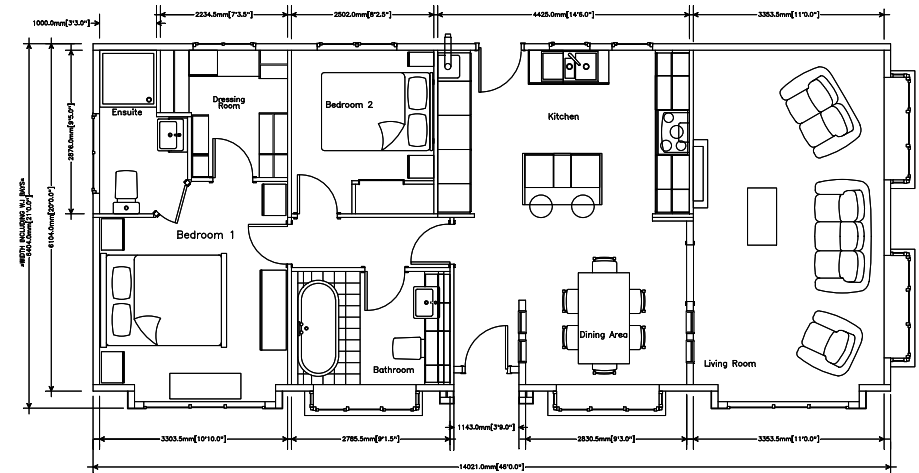
Like the Topaz is to the well-loved Chatsworth range of traditionally designed Stately-Albion residential homes, the Kensington caps the elegant and stylish line that runs from the new Tredegar Elite, the recently relaunched Goodwood, through the Wentwood, Windsor and Woburn; modern lines, slick and efficient features and looks to die for - the Kensington is an eye-catching, impressively appointed home that makes a statement by it's sheer presence and beauty, while using clever and innovative attributes to ensure that no space is wasted and every opportunity for inventive and clever design has been considered.

So for those looking for high-end luxury, combined with contemporary and modern design, an alternative is now available in an impressively spacious and modern package ... the Kensington.

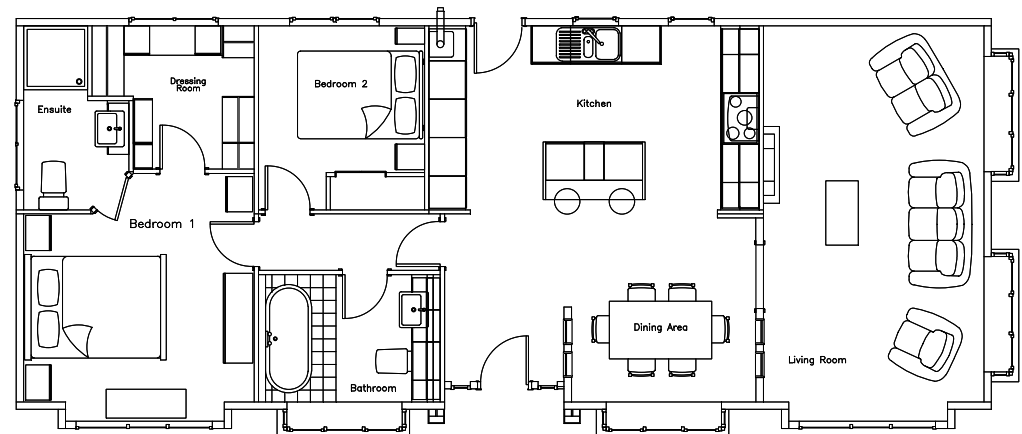




Kensington 46 x 20



Kensington 50 x 20



# Finishing touches

Your home is but a few simple choices away with the ability to modify our homes to your exact taste

## Choice and more choice...

The choice is huge ... light fittings, switches, door finishes, wallpaper colour schemes, bathroom fittings, and much more. Even the room layouts are variable.

Do you want a utility room, an extra bedroom or a study? Will you have a large kitchen with integrated kitchen appliances? Maybe an extra window or patio door in the lounge? All our homes have fitted wardrobes but how about a walk-in closet? Why not a corner spa bath in the family bathroom as well as a large ensuite shower room? There are so many combinations and options.

You will relish the choice and delight in the decision making – and if you need help, the friendly staff at Stately-Albion are on hand to assist you.

Remember, all our homes are built from modern materials, providing low maintenance with high levels of comfort. All Stately-Albion homes are built to meet the current British Standards 3632 for residential park homes.













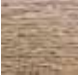




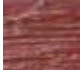










CanExel prefinished cladding is a product of our forests, from which it draws its inspiration. It turns your house into a home – a place that is a reflection of you, that blends harmoniously with your environment and integrates with virtually every architectural style, from traditional to modern. Its essence: its authenticity, its ability to make your house unlike any other. A place you want to come home to.

- |                                                                                       |             |                                                                                       |             |
|---------------------------------------------------------------------------------------|-------------|---------------------------------------------------------------------------------------|-------------|
|    | Barn Wood   |    | Acadia      |
|    | Black       |    | Barista     |
|    | Red Fox     |    | Sierra      |
|    | River Rock  |    | Timberwolf  |
|   | Sand        |   | Yellowstone |
|  | Sandalwood  |  | Cedar       |
|  | Scotia Blue |  | Coastline   |
|  | Khaki       |  | Country Red |
|  | Mist Grey   |  | Granite     |





STATELY



Stately-Albion Ltd, Unit 20, Darren Drive, Prince Of Wales Industrial Estate, Abercarn, Newport, NP11 5AR.

Tel: 01495-244472 Fax: 01495-248939 Email: [sales@stately-albion.co.uk](mailto:sales@stately-albion.co.uk)

[www.stately-albion.co.uk](http://www.stately-albion.co.uk)